

**FUJIFILM**

# **instax SQUARE Link™**

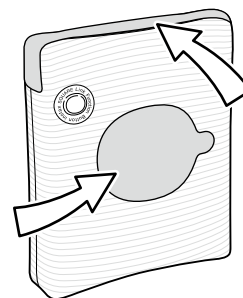
Smartphone Printer

**User's Guide (Full version)**



## Table of Contents

Before Use .....	3
Notes on Disposing of the Printer .....	3
Part Names.....	3
Installing the INSTAX SQUARE LINK App .....	4
Charging the Battery .....	4
Charging status indication with the LED.....	4
<b>Loading/Unloading the INSTAX SQUARE® Instant Film Pack .....</b>	<b>5</b>
Loading the INSTAX SQUARE Instant Film Pack .....	5
Unloading a Used INSTAX SQUARE Instant Film Pack.....	5
Turning on/off the Printer.....	6
Checking the Printer Status with the LED.....	6
<b>Connecting Your Smartphone and Printer Together and Printing.....</b>	<b>6</b>
When Establishing Connection for the First Time .....	6
When the Printer and Your Smartphone Are Already Connected.....	9
Reprinting an Image .....	10
Taking a Photo with the INSTAX Camera Mode in the App.....	11
AR Print and INSTAX Connect App Features.....	11
Specifications .....	11
Troubleshooting .....	12
<b>IMPORTANT SAFETY NOTICE .....</b>	<b>13</b>
Printer Care .....	13
Bluetooth® Devices: Cautions.....	15



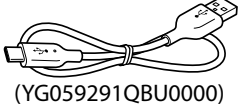
Remove and discard the protective sheet on the power button and the film ejection slot (as shown above) before use.

## Before Use

Before using the printer, check the following.

### Supplied Accessories

- USB Type-C cable for charging (1)
- User's Guide (1)
- 1 Year Limited Warranty (1)



- ❗ The battery has not been fully charged at the factory. Before using the printer for the first time, be sure to fully charge the battery. The free INSTAX SQUARE LINK App will need to be downloaded and paired with your Smartphone prior to initial use.

## Notes on Disposing of the Printer

**A built-in lithium ion battery is located inside this printer.**

When you dispose of the printer, follow your local regulations and dispose of it properly.

For proper disposal in the United States at product end-of-life, please contact 1-800-800-3854 Option #1 INSTAX.

For proper disposal in Canada at product end-of-life, please contact 1-800-461-0416.

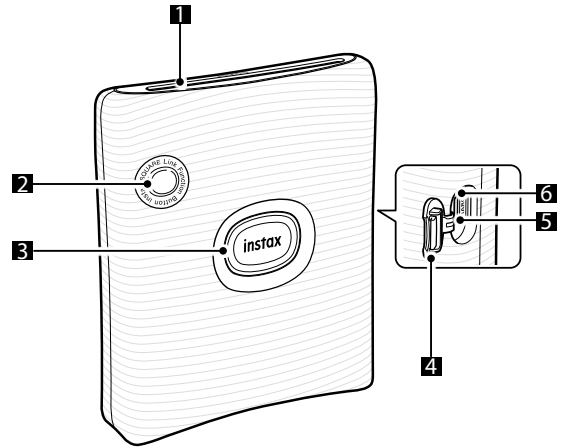
For proper disposal in Latin America at product end-of-life, please contact your local FUJIFILM distributor or dealer for disposal instructions.

- ❗ Do not attempt to remove the built-in battery. Injury may result.

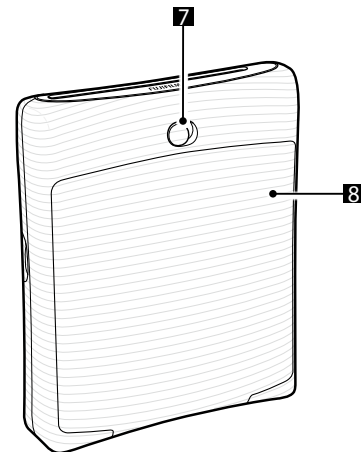
Read "IMPORTANT SAFETY NOTICE" (Page 13) for safety use.

## Part Names

### Front



### Rear



- 1 Film ejection slot
- 2 Function button
- 3 Power button/LED<sup>1</sup>
- 4 USB port cover
- 5 Reset button<sup>2</sup>
- 6 USB Type-C port
- 7 Film door lock
- 8 Film door<sup>3</sup>

<sup>1</sup> For details on LED indication status, see pages 4 and 6.

<sup>2</sup> If the printer does not work properly, press the reset button to reset the printer.

<sup>3</sup> Uses INSTAX SQUARE instant film, sold separately.

## Installing the INSTAX SQUARE LINK App


Please install the free INSTAX SQUARE LINK Smartphone App on your Smartphone before using the printer.

- If you are using an Android OS Smartphone, please search for the INSTAX SQUARE LINK Smartphone App in the Google Play Store and install it.  
\*Requirements for Android OS Smartphones: Android Ver. 7.0 or higher with Google Play Store installed
- If you are using an iOS Smartphone, please search for the INSTAX SQUARE LINK Smartphone App in the App Store and install it.  
\*Requirements for iOS Smartphones: iOS Ver. 12.0 or higher
- The INSTAX SQUARE LINK App may not be fully compatible with all versions and models of Smartphones.

Access the INSTAX SQUARE LINK App download sites below for the latest information on system requirements.

**Scan to download the INSTAX SQUARE LINK Smartphone App**

**iOS**



[https://instax.com/square\\_link/ios.html](https://instax.com/square_link/ios.html)

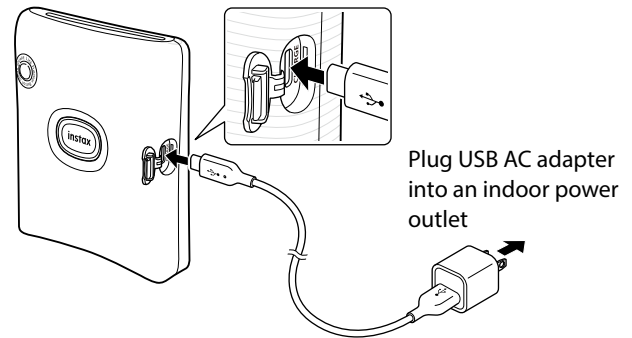
**Android OS**



[https://instax.com/square\\_link/android.html](https://instax.com/square_link/android.html)

The text QR Code itself is a registered trademark and wordmark of Denso Wave Incorporated.

## Charging the Battery



Note that a USB AC adapter is not included, but is typically provided with your Smartphone or otherwise purchased separately.

Connect the printer with a USB AC adapter (not included with INSTAX SQUARE LINK printer) using the supplied USB Type-C cable, then connect the USB AC adapter to an indoor power outlet.

- You can print an image while charging is in progress.
- Charging time is approximately 80 to 120 minutes.

### Charging status indication with the LED

When the printer is turned on:

Indication	Charging status
LED lights up in white	Not charging or charging is completed
LED flashes in white	Charging

When the printer is turned off:

Indication	Charging status
LED is turned off	Not charging or charging is completed
LED flashes in green	Charging

Check the charging status with your Smartphone when connected to the free INSTAX SQUARE LINK App.

### Charging from a PC:

- Connect the printer and PC directly. Do not connect via a USB hub or keyboard.
- If the PC goes into sleep mode while charging, charging is discontinued. To continue charging, exit sleep mode and then reconnect the provided USB Type-C cable.
- The battery may not be able to charge depending on the specifications and settings or conditions of the PC.

### Notes

- The battery has not been fully charged at the factory. Be sure to charge the battery before using the printer.
- The battery cannot be removed.
- For notes about the battery, see "Printer Care". (p.13)

## Loading/Unloading the INSTAX SQUARE® Instant Film Pack

### ⚠ CAUTION

Do not open the film door until you have used all of the exposures on your INSTAX instant film pack; otherwise, the remainder of the film will become exposed and turn white. Exposed instant film cannot be used to print INSTAX images.

- When you load the film pack, never press the two rectangular holes on the back of the film pack.
- Never use a film pack beyond its shelf life; otherwise, it may damage the printer.

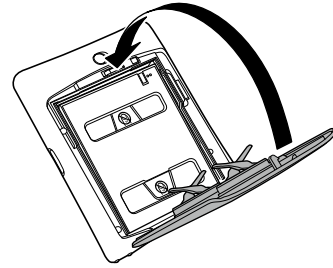
Use FUJIFILM INSTAX SQUARE Instant Print Film only. The INSTAX MINI™ or INSTAX WIDE™ Instant Film Packs cannot be used in the INSTAX SQUARE LINK printer.

### Notes on the film pack

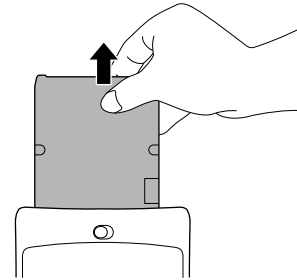
- Each FUJIFILM INSTAX SQUARE Instant Film Pack contains one black film protective cover and 10 film sheets.
- Do not remove the film pack from its inner bag until you are ready to load the film pack into the printer.
- The film cover is ejected automatically when the film door is closed.

For details, refer to the instructions and warnings on the package of FUJIFILM INSTAX SQUARE Instant Print Film.

### 3 Close the film door.



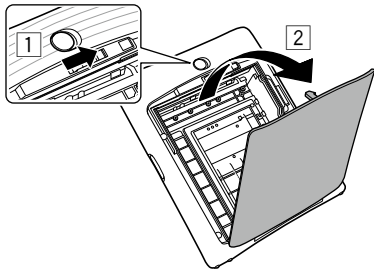
### 4 Remove the black film cover that is ejected from the printer.



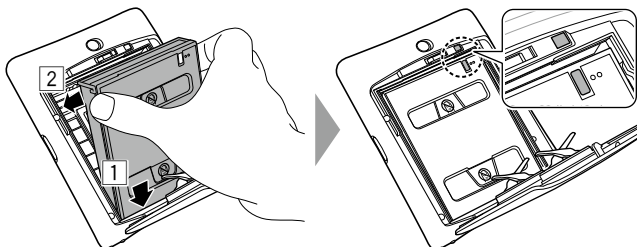
The INSTAX SQUARE LINK Smartphone Printer is designed for use with INSTAX SQUARE instant print film only.

## Loading the INSTAX SQUARE Instant Film Pack

### 1 Slide and hold the film door lock and open the film door.

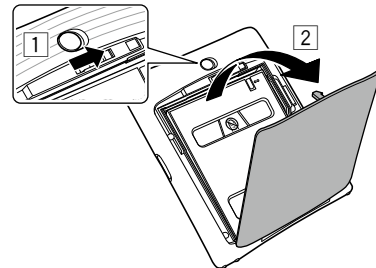


### 2 Insert an INSTAX SQUARE instant film pack by aligning the yellow marks.

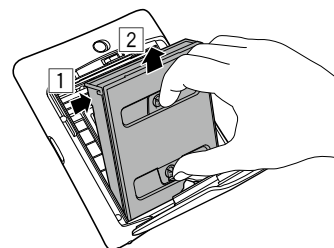


## Unloading a Used INSTAX SQUARE Instant Film Pack

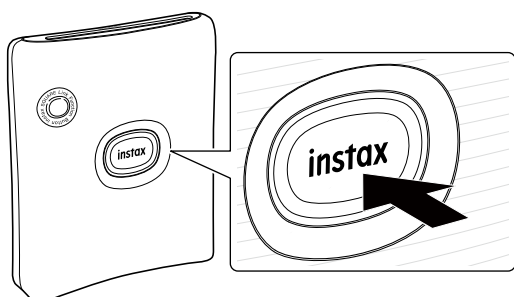
### 1 Slide the film door lock to open the film door.



### 2 Grasp the rectangular holes on the film pack, then pull film pack out from the printer. Properly dispose of used film pack.



## Turning on/off the Printer



Press and hold the Power button for approximately 1 second to turn the printer on or off.  
The LED lights up when the printer is turned on.  
If the printer remains idle without operation for 5 minutes, the printer turns off automatically.

## Checking the Printer Status with the LED

You can check the printer status with the LED.

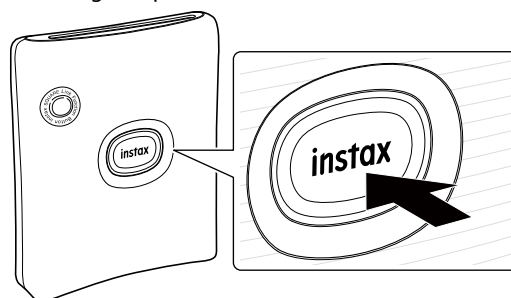
Color	LED status	Status
Blue	Flashing	Firmware is being updated
Purple	Flashing	Reprinting
Yellow	Lights up for 3 seconds, then turns off	Low battery * If this continues even after charging, there may be a malfunction. In such cases, contact Fujifilm's customer support team or a FUJIFILM authorized dealer.
Yellow	Continuous flashing	Print error occurred Please check to make sure the film ejection slot is not jammed and the film door is securely closed. * If this continues to occur, contact Fujifilm's customer support team or a FUJIFILM authorized dealer for assistance.

## Connecting Your Smartphone and Printer Together and Printing

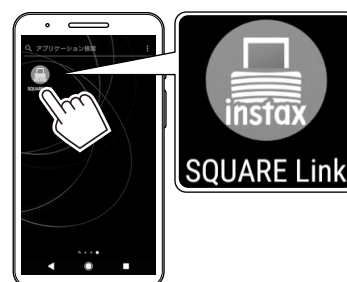
With the functions of the INSTAX SQUARE LINK Smartphone App, you can edit your favorite Smartphone images before printing by adding text, applying filters, and much more! See Page 4 on how to install the INSTAX SQUARE LINK Smartphone App or check out the following site: [https://instax.com/square\\_link/](https://instax.com/square_link/)

### When Establishing Connection for the First Time

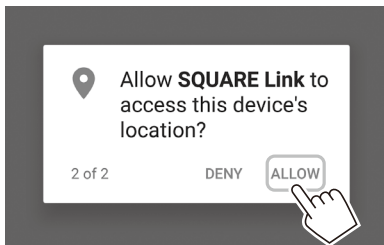
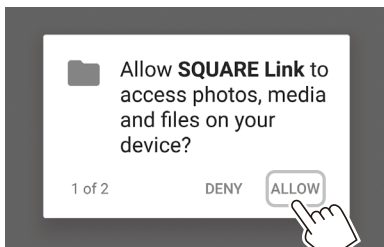
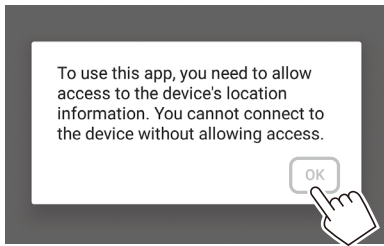
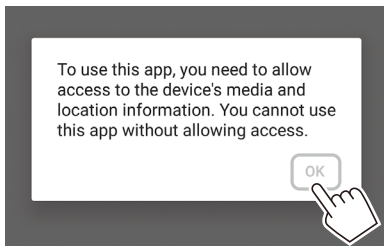
- 1 Press and hold the Power button for approximately 1 second to turn the printer on.  
The LED lights up.



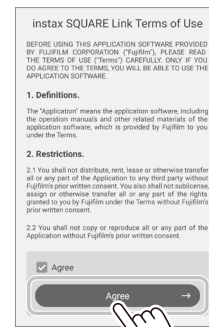
- 2 Start the downloaded INSTAX SQUARE LINK Smartphone App.



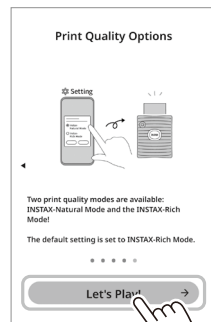
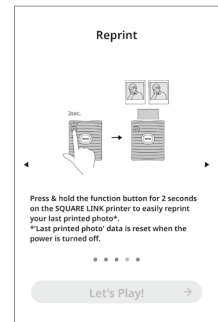
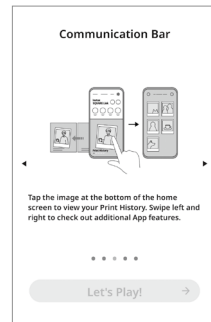
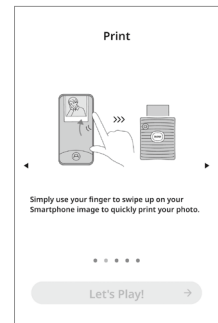
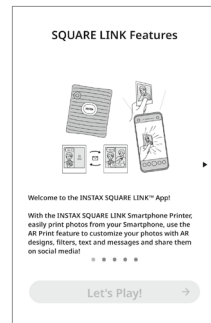
**3** Click through the below pop-up windows to set up the printer.



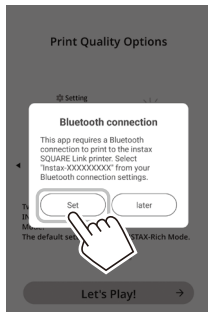
**4** Read the Terms of Use, check the [Agree] box and tap the [Agree →] bar.



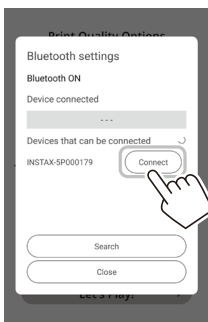
**5** Quick instructions are displayed. Read the instructions and tap [Let's Play! →].



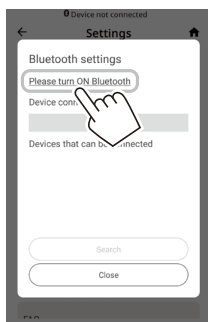
- 6 Set up the Bluetooth connection between your Smartphone and the printer.**  
 [Bluetooth connection] can also be set in the process of printing.



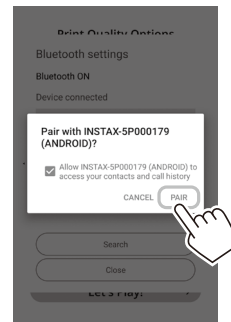
- 7 When a printer is detected, tap [Connect].**  
 If multiple printers are detected, select the printer you would like to connect to from the list. Locate the printer's identifier (device name) on the bottom of the printer. Make sure the printer is on during this step. If not, turn the printer on by pressing and holding the Power button for 1 second.



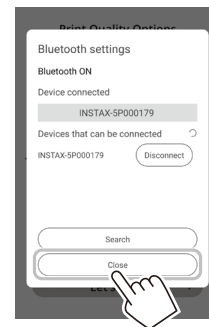
**Note**  
 If your Bluetooth settings are switched off, tap [Please turn on Bluetooth] to put the Bluetooth settings on.



- 8 When the message is displayed, check the box and tap [PAIR].**



- 9 When a printer is connected, tap [Close].**



- 10 You are now ready to use the printer. To select an image to print, tap the [Simple Print] button on the home screen and select an image from the photos on your Smartphone.**



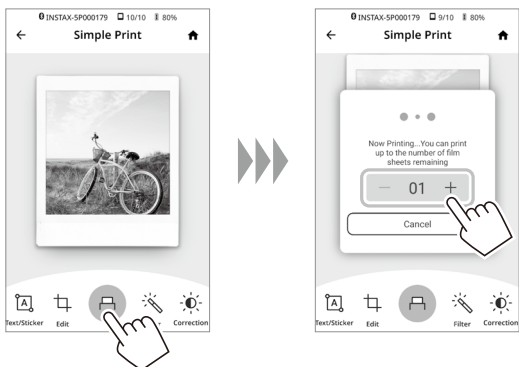
To edit your image for printing, click on the below editing options on the bottom of the screen before printing.

	Enters text or attaches a sticker to the printed image.
	Zooms in/out or rotates the printed image.
	Applies a filter on the printed image.
	Adjusts the brightness of the printed image.



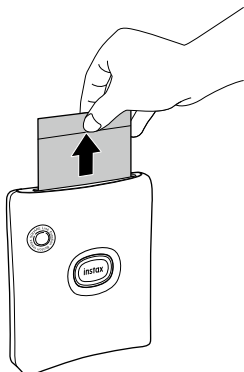
**11 Tap  or swipe the image up on the screen to print your image.**

After a slight transmission delay (roughly 12 seconds), the printer starts printing. You can also select the number of images to print during image transfer.



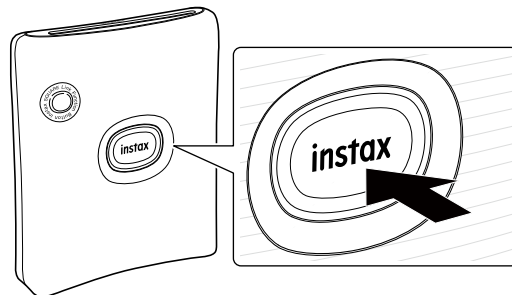
**12 When your photo has been ejected (the printer stops making a sound), take it out of the printer by grasping the edge of the photo. Your instant photo will develop in roughly 90 seconds.**

Confirm the number of images remaining in your loaded INSTAX SQUARE instant film pack on the Smartphone App screen.

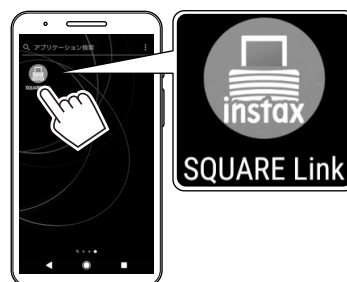


**When the Printer and Your Smartphone Are Already Connected**

- 1 Press and hold the Power button for approximately 1 second to turn the printer on.**  
The LED lights up.




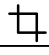


- 2 Start the downloaded INSTAX SQUARE LINK Smartphone App.**



- 3 You are now ready to use the printer. To select an image to print, tap the [Simple Print] button on the home screen and select an image from the photos on your Smartphone.**



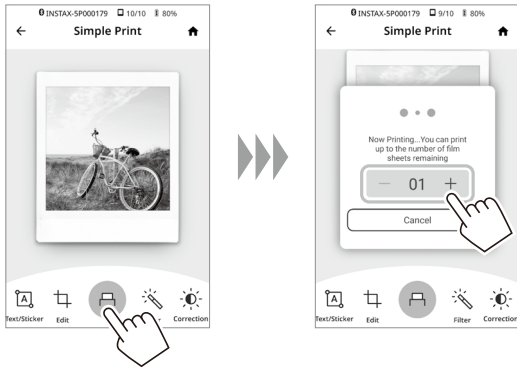
To edit your image for printing, click on the below editing options on the bottom of the screen before printing.

	Enters text or attaches a sticker to the printed image.
	Zooms in/out or rotates the printed image.
	Applies a filter on the printed image.
	Adjusts the brightness of the printed image.

**4 Tap  or swipe the image up on the screen to print your image.**

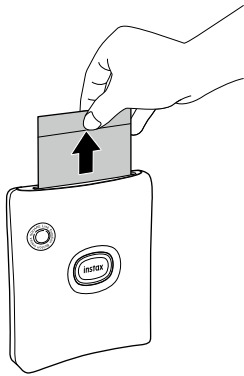
After a slight transmission delay (roughly 12 seconds), the printer starts printing.

You can also select the number of images to print during image transfer.



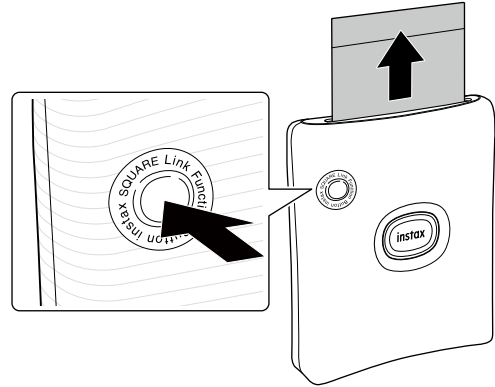
**5 When your photo has been ejected (the printer stops making a sound), take it out of the printer by grasping the edge of the photo. Your instant photo will develop in roughly 90 seconds.**

Confirm the number of images remaining in your loaded INSTAX SQUARE instant film pack on the Smartphone App screen.



## Reprinting an Image

The last image printed can be reprinted by pressing and holding the function button for 2 seconds.



**Note**

When you turn off the printer, you will not be able to reprint the image you last printed after you turn the printer back on. However, you will be able to select and print the same image again from the INSTAX SQUARE LINK App.

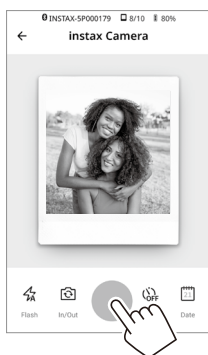
## Taking a Photo with the INSTAX Camera Mode in the App

You can take a photo using the INSTAX Camera Mode featured in the App. You can use flash, switch between the front and rear cameras, use a self-timer or add the date to your photo. For details, see "FAQ" of the INSTAX SQUARE LINK App.

### 1 Select INSTAX Camera Mode.



### 2 Take a photo.



## AR Print and INSTAX Connect App Features

With the AR Print App Feature, you can choose from various fun AR (augmented reality) designs, filters, text and messages to add to your printed INSTAX SQUARE photos.

With the INSTAX Connect App Feature, you can easily share your INSTAX SQUARE photos with anyone, anywhere!

For more details, scan here.



[https://instax.com/square\\_link/](https://instax.com/square_link/)

## Specifications

Recording method	3-color exposure with OLED
Film used	FUJIFILM INSTAX SQUARE Instant Film (sold separately)
Number of films	10 films/pack
Image size	2.4 in. x 2.4 in./62 mm x 62 mm
Exposure pixel count	800 x 800 dots
Exposure resolution	12.5 dots/mm (318 dpi, 80 μm dot pitch)
Exposure gradation	RGB gradation of 256 colors
Interface	Bluetooth Ver. 4.2 (BLE)
Printable image format	JPEG, PNG, HEIF, DNG
Print transmission time	Approximately 12 seconds for transmission and to start printing *Image development time approximately 90 seconds
Possible number of printed images	Approximately 100 (from full charge; number of prints depends on the usage conditions)
Power supply	Lithium ion battery (internal type: not removable)
Charging time	Approximately 80 to 120 minutes (depending upon environment temperature at time of charging)
Power consumption	Approximately 3 W
Operating environment	Temperature: 41°F to 104°F (5°C to 40°C) Humidity: 20% to 80% (no condensation)
Main unit dimensions	4.1 in. x 1.5 in. x 5.0 in./105 mm x 37.5 mm x 127.5 mm (excluding projecting parts)
Main unit weight	Approximately 0.52 lbs / 236 g (excluding film pack)
Supplied accessory	USB cable (Type-C, Length: 11.8 in./30 cm)

\*The above specifications are subject to change.

## Troubleshooting

Please check the following items before considering a problem to be a malfunction. If the problem persists even after taking action, please contact the Fujifilm service center for repair or visit the website below.

[https://instax.com/square\\_link/en/support/faq/](https://instax.com/square_link/en/support/faq/)

**If the following problem occurs...**

Problem	Possible causes and solutions
I cannot turn on the printer.	<ul style="list-style-type: none"> <li>The battery may not be charged. Please charge the printer.</li> <li>You did not press the Power button long enough. Press and hold the Power button for approximately 1 second.</li> </ul>
The battery loses its charge quickly.	If you use the printer in a very cold environment, the battery will drain quickly. Please keep the printer warm before printing.
The printer turned off during use.	The battery level may be low. Please charge the printer.
Charging does not start.	Make sure that the USB power adapter plug is properly connected to the power outlet.
It takes too long to charge.	At low temperatures, charging may take longer than what is normally experienced.
Charging does not start or prematurely stops.	Charge the battery in a temperature range of 41°F to 104°F (5°C to 40°C). If you cannot charge the printer in this range, contact your FUJIFILM authorized dealer or Fujifilm's customer support team.
The printer does not work properly.	<ul style="list-style-type: none"> <li>There may be a temporary malfunction. Please press the reset button. If it still does not work properly, please contact our repair service center for repair.</li> <li>The battery may not be charged. Please charge the printer.</li> </ul>
The film pack does not load or does not load smoothly.	<ul style="list-style-type: none"> <li>Please use FUJIFILM INSTAX SQUARE instant print film only (INSTAX MINI or INSTAX WIDE instant print film cannot be used).</li> <li>Align the yellow mark on the film pack with the printer alignment mark (yellow) and load it in accordance with the loading instructions above and on the film pack.</li> </ul>
The film does not unload.	<ul style="list-style-type: none"> <li>The film may be misaligned due to shock such as vibration or dropping. Please load a new film pack.</li> <li>If the film is jammed, turn the printer off and turn it on again. If the problem persists, remove the jammed film and then load a new film pack.</li> </ul>

Problem	Possible causes and solutions
Some or all of the finished prints are white.	Do not open the film door until you have used all of the exposures on your INSTAX instant film pack; otherwise, the remainder of the film will become exposed and turn white. Exposed instant film cannot be used to print INSTAX images.
The image does not fully develop.	<ul style="list-style-type: none"> <li>Do not shake, bend, fold or hold the image immediately after it is printed.</li> <li>Do not obstruct the film ejection slot.</li> </ul>
I cannot reprint images.	Turn the printer on, select the desired Smartphone photo, and try again.

## IMPORTANT SAFETY NOTICE

This product has been designed with safety in mind, and to provide safe operation when handled correctly and in accordance with the instructions in this User's Guide. It is important that both the product and the INSTAX SQUARE instant film pack are handled properly and used only to print photos as instructed in this User's Guide and in the INSTAX SQUARE instant film pack instructions. For your ease and safety, strictly follow the instructions in this User's Guide. Keep this User's Guide in a safe, convenient place for easy future reference as needed.

### WARNING

This symbol indicates danger, which could result in product damage, injury or death. Follow the instructions indicated to avoid damage to the printer or injury.

### WARNING

**⚠ If one of the following cases occur, immediately unplug the USB Type-C cable, turn the printer off and refrain from any further use of the printer. Call the applicable Fujifilm customer service center.**

- The printer becomes hot, emits smoke, has a burnt smell, or otherwise seems abnormal.
- The printer is dropped into water, or foreign objects like water, sand, dirt or metal get inside the printer.

### WARNING

**⚠ The printer has a built-in battery. Do not subject it to heat, expose it to an open flame, drop it, attempt to remove it, or otherwise apply impact to it. Doing so may cause the printer to explode, resulting in injury.**

### WARNING

- ⚠ **Never attempt to take this product apart. You may be injured.**
- ⚠ **All repairs should be handled solely by Fujifilm. Injury may result from attempts to self-assess or repair this printer.**
- ⚠ **If this product is dropped or damaged so that the inside is showing, do not touch it. Contact Fujifilm's customer support team.**
- ⚠ **Do not touch any parts which are inside the film door. You may be injured.**
- ⚠ **Never get this product wet or handle it with wet hands. Doing so may result in electric shock and injury.**
- ⚠ **Promptly unplug the USB Type-C cable once battery is fully charged. Printer will not over-charge.**
- ⚠ **Keep out of the reach of small children. This product could cause injury in the hands of a child.**
- ⚠ **Do not cover or wrap the printer or USB AC power adapter in a cloth or blanket, or otherwise place the printer in the sun or an environment where heat may build up. This could distort the casing or cause a fire.**

## Printer Care

### ■ Handling the Printer

- **⚠ CAUTION** - Do not expose to excessive heat such as sunshine, fire or the like during use, storage or transportation. An explosion or leakage of flammable liquid or gas could result. Also, ensure proper disposal in accordance with the instructions below.
- **⚠ CAUTION** - Do not remove or attempt to remove the lithium battery. Without limitation, do not expose or attempt to expose the printer or the lithium battery to fire or a hot oven. Do not attempt to damage, mechanically crush or cut the lithium battery, as an explosion could result.
- **⚠ CAUTION** - Do not subject to extremely low air pressure at high altitude. An explosion or the leakage of flammable liquid or gas could result.

### ■ Printer Care

1. **Do not open the film door until you have used up the loaded INSTAX SQUARE instant film pack. Doing so will expose the remaining film and the film can no longer be used.**
2. Your printer is a precision instrument. Do not get it wet or drop it. Also, do not expose it to sand, dust or dirt.
3. Do not use cleaning products or solvents such as those with bleach or alcohol to remove dirt. Wipe with a damp cloth if and as necessary.
4. Keep the film chamber and printer interior clean to avoid damaging the film.
5. In hot weather, do not leave your printer in hot places such as in a car or on the beach. Do not leave it in damp places or places where weather exposure could result.
6. Moth repellent gas such as naphthalene may affect your printer and photo prints. Store your printer and photo prints in a place where exposure to harmful cleaning or other household elements will be avoided.
7. Note that the temperature range within which your printer can be used is 41°F to 104°F (5°C to 40°C).
8. Take great care to ensure that your photo prints do not violate copyright, image rights, privacy or other personal rights and do not offend public decency. Actions that violate the rights of others, that are contrary to public decency, or that constitute a nuisance may be punishable by law or otherwise legally actionable.
9. This printer is designed for personal/household and limited commercial use. Download the free App to your Smartphone.

### ■ Charging the Battery

The battery is not charged at shipment. Charge the battery completely before use.

Charge the battery using the supplied USB Type-C cable and the USB AC Adapter from your Smartphone. Charging times will increase at ambient temperatures below 50°F (10°C) or above 95°F (35°C). Do not attempt to charge the battery in environments with temperatures above 104°F (40°C); at temperatures below 41°F (5°C), the battery will not charge.

### ■ Battery Life

At normal temperatures, the battery can be recharged about 300 times. A noticeable decrease in the length of time the battery will hold a charge indicates that it has reached the end of its service life.

### ⚠ CAUTION - Handling the Battery

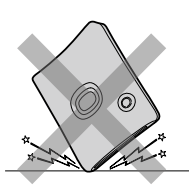
The battery and printer body may become warm to the touch after extended use. This is normal.

■ **Required certification markings are located inside the film chamber.**

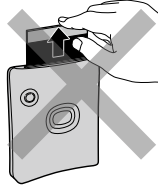
### ■ Cautions During Printing



Do not shake the printer while printing.



Do not drop the printer while printing.



Do not cover the film ejection slot while printing.

### ■ INSTAX SQUARE Instant Film and Print Care

This printer uses INSTAX SQUARE instant print film, sold separately. See FUJIFILM INSTAX SQUARE instant film pack use instructions. Follow all instructions for safe and proper use, including:

1. Keep the film in a cool place. Do not leave the film in a place where the temperature is extremely high (e.g., in a closed car) for many hours.
2. Do not puncture, tear, or cut INSTAX SQUARE instant film. If film becomes damaged, do not use.
3. When you load a film pack, use the film as soon as possible.
4. If the film has been kept in a place where the temperature is extremely high or low, bring it to room temperature before loading or starting to print photos.
5. Be sure to use the film before the expiration or "Use Before" date.
6. Avoid airport checked luggage inspection and other strong X-ray illumination. Such exposure may cause fogging and otherwise affect your unused film. Carrying your printer and film onto an aircraft in your carry-on luggage is recommended. (Check with each airport for more information.)
7. Avoid exposing the developed prints to strong light, and keep them in a cool, dry place.
8. ⚠ Do not puncture or cut the film as it contains a small amount of caustic paste (high alkaline). Never let children or animals put the film into their mouth. Also pay attention so that the paste does not come into contact with skin or clothes. If the paste inside the film comes into contact with skin or clothes, immediately wash off with plenty of water. If the paste comes into contact with the eyes or mouth, immediately wash the area with plenty of water and contact a doctor. Note that the alkaline inside the film remains active for about 10 minutes after the photo has been printed.

### ⚠ Cautions on Handling INSTAX SQUARE Instant Film and Photo Prints (film activities to be avoided):



## Bluetooth® Devices: Cautions

**IMPORTANT:** Read the following notices before using the product's built-in Bluetooth transmitter.

■ **Use only as part of a Bluetooth network.**

Do not use in applications requiring a high degree of reliability, for example in medical devices or other systems that may directly or indirectly impact human life. When using the device in computer and other systems that demand a greater degree of reliability than Bluetooth networks, be sure to take all necessary precautions to ensure safety and prevent malfunction. FUJIFILM Corporation and its affiliates do not accept liability for damages resulting from unauthorized use.

■ **Use only in the country in which the device was purchased.**

This device conforms to regulations governing Bluetooth devices in the country in which it was purchased. Observe all location regulations when using the device. FUJIFILM Corporation and its affiliates do not accept liability for problems arising from use in other jurisdictions.

■ **Wireless data (images) may be intercepted by third parties.**

FUJIFILM Corporation and its affiliates are not responsible for intercepted transmissions, or for unintended image uses.

■ **Do not use the device in locations subject to magnetic fields, static electricity, or radio interference.**

Do not use the transmitter in the vicinity of microwave ovens or in other locations subject to magnetic fields, static electricity, or radio interference that may prevent reception of wireless signals. Mutual interference may occur when the transmitter is used in the vicinity of other wireless devices operating in the 2.4 GHz band.

■ **The Bluetooth transmitter operates in the 2.4 GHz band. The maximum radio-frequency power is 8.28 mW.**

■ **This device operates on the same frequency as commercial, educational, and medical devices and wireless transmitters.**

It also operates on the same frequency as licensed transmitters and special unlicensed low-voltage transmitters used in radio-frequency identification tracking systems for assembly lines and in other similar applications.

■ **To prevent interference with the above devices, observe the following precautions.**

Confirm that the radio-frequency identification transmitter is not in operation before using this device. If you notice that this device causes interference in low-voltage radio-frequency identification tracing systems, contact a Fujifilm representative.

■ **The following may be punishable by law:**

- Disassembly or modification of this device.
- Removal of device certification labels.

### For customers in the USA:

FCC ID : W2Z-03000010

#### FCC Statement

This device complies with part 15 of the FCC Rules.

Operation is subject to the following two conditions: (1) this device may not cause harmful interference, and (2) this device must accept any interference received, including interference that may cause undesired operation.

For more information, access the website below.

[https://instax.com/square\\_link/en/spec/](https://instax.com/square_link/en/spec/)

#### CAUTION

This device has been tested and found to comply with the limits for a Class B digital device, pursuant to Part 15 of the FCC Rules.

These limits are designed to provide reasonable protection against harmful interference in a residential installation.

This equipment generates, uses, and can radiate radio frequency energy and, if not installed and used in accordance with the instructions, may cause harmful interference to radio communications.

However, there is no guarantee that interference will not occur in a particular installation.

If this equipment does cause harmful interference to radio or television, which can be determined by turning the product off and on, the user is encouraged to try to correct the interference by one or more of the following measures:

- Reorient or relocate the receiving antenna.
- Increase the separation between the product and receiver.
- Connect the product into an outlet on a circuit different from that to which the receiver is connected.
- Consult the dealer or an experienced radio/TV technician for help.

#### FCC CAUTION

Changes or modifications not expressly approved by Fujifilm responsible for compliance could void the user's authority to operate the equipment.

This transmitter must not be co-located or operated in conjunction with any other antenna or transmitter.

#### Radiation Exposure Statement

This device meets the government's requirements for exposure to radio waves. This device is designed and manufactured not to exceed the emission limits for exposure to radio frequency (RF) energy set by the Federal Communications Commission of the U.S. Government.

The exposure standard employs a unit of measurement known as the Specific Absorption Rate, or SAR. The SAR limit set by the FCC is 1.6 W/kg. Tests for SAR are conducted using standard operating positions accepted by the FCC with the device transmitting at its highest certified power level in all tested frequency bands.

#### Notes on the Grant

To comply with Part 15 of the FCC Rules, this product must be used with a Fujifilm-specified USB Type-C cable.

**For customers in CANADA:**

IC : 7736B-03000009

**ISED statement:**

This device complies with Innovation, Science and Economic Development Canada’s licence-exempt RSS(s). Operation is subject to the following two conditions:

- (1) This device may not cause interference, and
- (2) This device must accept any interference, including interference that may cause undesired operation of the device.

**CAUTION:**

**CAN ICES-003 (B)/NMB-003 (B)**

This Class B digital apparatus complies with Canadian ICES-003.

**Radiation Exposure Statement**

The available scientific evidence does not show that any health problems are associated with using low power wireless devices. There is no proof, however, that these low power wireless devices are absolutely safe. Low power wireless devices emit low levels of radio frequency energy (RF) in the microwave range while being used. Whereas high levels of RF can produce health effects (by heating tissue), exposure of low-level RF that does not produce heating effects causes no known adverse health effects. Many studies of low-level RF exposures have not found any biological effects. Some studies have suggested that some biological effects might occur, but such findings have not been confirmed by additional research. This device has been tested and found to comply with ISED radiation exposure limits set forth for an uncontrolled environment and meets RSS-102 of the ISED radio frequency (RF) exposure rules.

**Proper Disposal – US, Canada and Latin America**



Disposal of Electric and Electronic Equipment in Private Households  
Disposal of used Electrical & Electronic Equipment  
(Applicable in the European Union and other European countries with separate collection systems)

This symbol on the product, or in the manual and in the warranty, and/or on its packaging indicates that this product shall not be treated as household waste.

Instead it should be taken to an applicable collection point for the recycling of electrical and electronic equipment.

By ensuring this product is disposed of correctly, you will help prevent potential negative consequences to the environment and human health, which could otherwise be caused by inappropriate waste handling of this product.

The recycling of materials may help to conserve natural resources. For more detailed information about recycling of this product, please contact your local city recycling office, your household waste disposal service or the authorized FUJIFILM dealer from which you purchased the product.

For proper disposal in the United States at product end-of-life, please contact Fujifilm at 1-800-800-3854 Option #1 INSTAX.

For proper disposal in Canada at product-end-of-life, please contact Fujifilm at 1-800-461-0416.

For proper disposal in Latin America at product end-of-life, please contact your local FUJIFILM distributor or dealer for disposal instructions.

**Information for Fujifilm in the United States**

FUJIFILM North America Corp.  
200 Summit Lake Drive  
Valhalla, New York 10595, USA  
1-800-800-3854 Option #1 INSTAX

**Information for Fujifilm in Canada**

FUJIFILM Canada Inc.  
600 Suffolk Court  
Mississauga, Ontario L5R 4G4, Canada  
1-800-461-0416

If you have any inquiries about this product, please contact a FUJIFILM authorized dealer, or access the website below.  
[https://instax.com/square\\_link](https://instax.com/square_link)

FUJIFILM, INSTAX, INSTAX MINI, INSTAX WIDE, INSTAX SQUARE and INSTAX SQUARE LINK are trademarks of FUJIFILM Corporation and its affiliates.

© 2022 FUJIFILM Corporation. All rights reserved.

The Bluetooth® word mark and logos are registered trademarks owned by the Bluetooth SIG, Inc., and any use of such marks by Fujifilm is under license.

**Independent JPEG Group (IJG) Licenses**

The software used in the INSTAX SQUARE LINK Smartphone Printer is based in part on the work of the Independent JPEG Group.

**FUJIFILM**

**FUJIFILM Corporation**

7-3, AKASAKA 9-CHOME, MINATO-KU, TOKYO 107-0052, JAPAN