

FUJIFILM

instax mini Link™ 2

Smartphone Printer

User's Guide (Full version)



Table of Contents

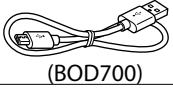
Before Use	3
Notes on Disposing of the Printer	3
Part Names.....	3
Installing the INSTAX MINI LINK App	4
Charging the Battery	4
Charging status indication with the LED.....	4
Loading/Unloading the INSTAX MINI™ Instant Film Pack	5
Loading the INSTAX MINI Instant Film Pack	5
Unloading a Used INSTAX MINI Instant Film Pack.....	5
Turning on/off the Printer.....	6
Checking the Printer Status with the LED.....	6
Connecting Your Smartphone and Printer Together and Printing.....	6
When Establishing Connection for the First Time	6
When the Printer and Your Smartphone Are Already Connected.....	9
Reprinting an Image	10
Controlling the INSTAX MINI LINK App with the Angle of the Printer and the Power Button.....	11
Changing the App Mode when the Home Screen is Appearing on the App	11
Controlling Zoom and Shutter When Using the INSTAX Camera on the App.....	11
instaxAiR™ Photo Drawing Effect Feature	11
Specifications	12
Troubleshooting	12
IMPORTANT SAFETY NOTICE	13
Printer Care	14
Bluetooth® Devices: Cautions.....	15

Before Use

Before using the printer, check the following.

Supplied Accessories

- Micro USB cable for charging (1)
- User's Guide (1)
- 1 Year Limited Warranty (1)



- ❗ The battery has not been fully charged at the factory. Be sure to charge the battery before using the printer.

Notes on Disposing of the Printer

A built-in lithium ion battery is used for this printer.

When you dispose of the printer, follow your local regulations and dispose of it properly.

For proper disposal in the United States at product end-of-life, please contact 1-800-800-3854 Option #1 INSTAX.

For proper disposal in Canada at product end-of-life, please contact 1-800-461-0416.

For proper disposal in Latin America at product end-of-life, please contact your local FUJIFILM distributor or dealer for disposal instructions.

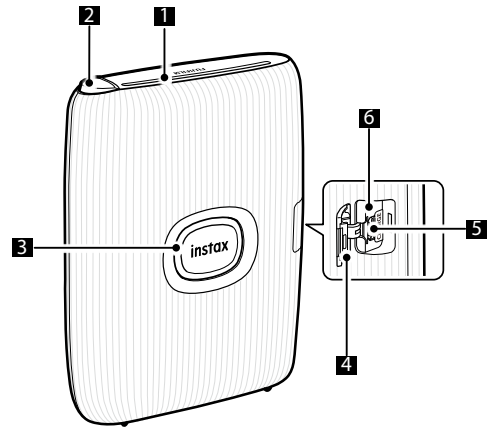
- ❗ Do not attempt to remove the built-in battery. Injury may result.

Read "IMPORTANT SAFETY NOTICE" (Page 13) for safety use.

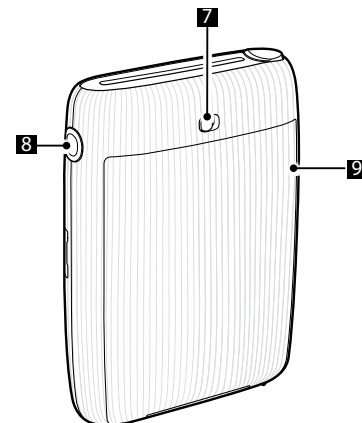
Part Names

- ❗ Before using the printer for the first time, be sure to fully charge the battery.

Front



Rear



- ❶ Film ejection slot
- ❷ Feature button
- ❸ Power button/LED¹
- ❹ Micro USB port cover
- ❺ Micro USB port
- ❻ Reset button²
- ❼ Film door lock
- ❽ Side LED
- ❾ Film door³

¹ For details on LED indication status, see pages 4 and 6.

² If the printer does not work properly, press the reset button to reset the printer.

³ Uses INSTAX MINI instant film, sold separately.

Installing the INSTAX MINI LINK App

Please install the INSTAX MINI LINK Smartphone App on your Smartphone before using the printer.

- If you are using an Android OS Smartphone, please search for the INSTAX MINI LINK Smartphone App in the Google Play Store and install it.

*Requirements for Android OS Smartphones: Android Ver. 7.0 or higher with Google Play Store installed

- If you are using an iOS Smartphone, please search for the INSTAX MINI LINK Smartphone App in the App Store and install it.

*Requirements for iOS Smartphones: iOS Ver. 12.0 or higher

- Depending on your Smartphone model, you may not be able to use the INSTAX MINI LINK Smartphone App even if you have installed it and your Smartphone meets the above requirements.

Access the INSTAX MINI LINK App download site for the latest information on system requirements.

Scan to download the INSTAX MINI LINK Smartphone App



iOS

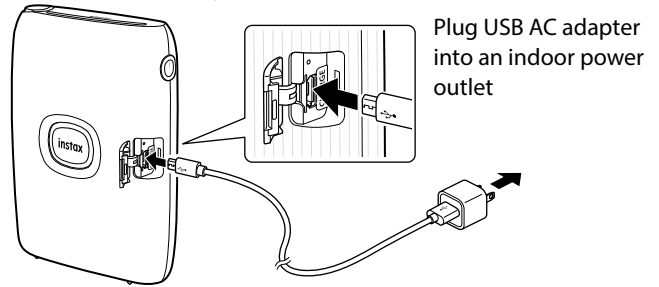


Android OS

The text QR Code itself is a registered trademark and wordmark of Denso Wave Incorporated.

Charging the Battery

- ❶ Be sure to properly attach the Micro USB cable as indicated.



Plug USB AC adapter into an indoor power outlet

Note that a USB AC adapter is not included, but is typically provided with your Smartphone or otherwise purchased separately.

Connect the printer with a USB AC adapter supplied with your Smartphone (not included with INSTAX MINI LINK 2 printer) using the supplied USB cable, then connect the USB AC adapter to an indoor power outlet.

- You can print an image while charging is in progress.
- Charging time is approximately 80 to 120 minutes.

Charging status indication with the LED

Check the charging status with your Smartphone when connected with the free INSTAX MINI LINK App.

For instructions on how to download the App, please see the "Installing the INSTAX MINI LINK App" section on this page.

Indication	Charging status
LED lights up in white	Not charging
LED flashes in white	Charging

* When the printer is turned off, the LED goes off after the charging is completed. When the printer is turned on and not connected with the App, the LED lights up in white after the charging is completed.

Charging from a PC:

- Connect the printer and PC directly. Do not connect via a USB hub or keyboard.
- If the PC goes into sleep mode while charging, charging is discontinued. To continue charging, exit sleep mode and then reconnect the Micro USB cable.
- The battery may not be able to charge depending on the specifications and settings or conditions of the PC.

Notes

- The battery has not been fully charged at the factory. Be sure to charge the battery before using the printer.
- The battery cannot be removed.
- For notes about the battery, see "Printer Care". (p.14)

Loading/Unloading the INSTAX MINI™ Instant Film Pack

⚠ CAUTION

Do not open the film door until you have used up the film; otherwise, the rest of the film will become exposed and turn white. The film can no longer be used.

- When you load the film pack, never press the two rectangular holes on the back of the film pack.
- Never use a film pack beyond its shelf life; otherwise, it may damage the printer.

Use FUJIFILM INSTAX MINI Instant Print Film only. The INSTAX SQUARE® or INSTAX WIDE™ Instant Film Packs cannot be used.

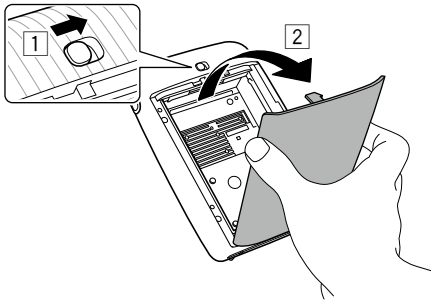
Notes on the film pack

- Each FUJIFILM INSTAX MINI Instant Film Pack contains one black film protective cover and 10 film sheets.
- Do not remove the film pack from its inner bag before loading it into the printer.
- The film cover is ejected automatically when the film door is closed.

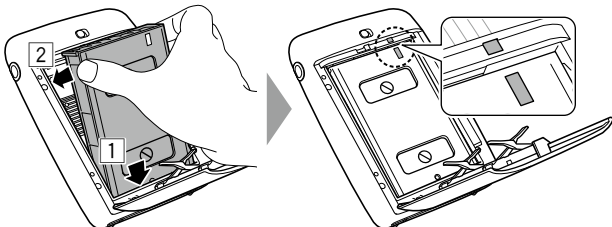
For details, refer to the instructions and warnings on the package of FUJIFILM INSTAX MINI Instant Print Film.

Loading the INSTAX MINI Instant Film Pack

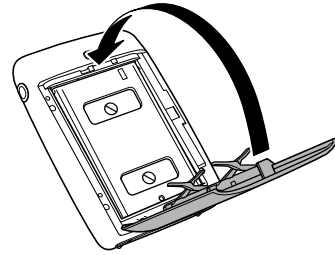
- 1 Slide and hold the film door lock and open the film door.



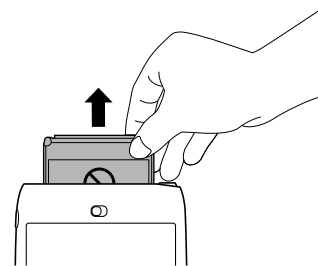
- 2 Insert an INSTAX MINI instant film pack by aligning the yellow marks.



- 3 Close the film door.



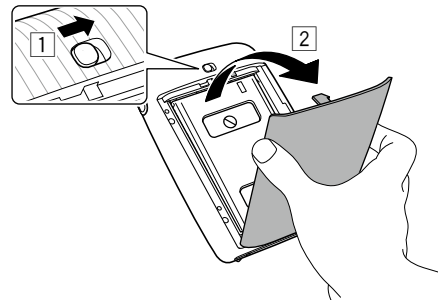
- 4 Remove the black film cover that is ejected from the printer.



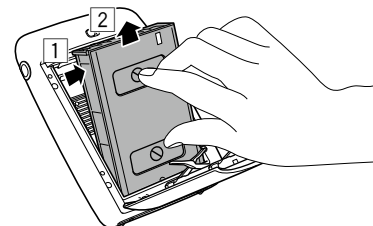
The INSTAX MINI LINK 2 Smartphone Printer is designed for use with INSTAX MINI instant print film only.

Unloading a Used INSTAX MINI Instant Film Pack

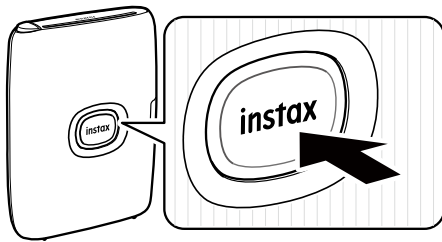
- 1 Slide the film door lock and open the film door.



- 2 Grasp the rectangular holes on the film pack, then pull film pack out from the printer. Properly dispose of used film pack.



Turning on/off the Printer



Press and hold the Power button for approximately 1 second to turn the printer on or off.

Turning the printer on lights up the LED.

If no operation occurs for 5 minutes, the printer turns off automatically.

Checking the Printer Status with the LED

You can check the printer status with the LED.

Color	LED status	Status
Blue	Flashing	Firmware is being updated
Purple	Flashing	Reprinting
Yellow (The printer will be turned off after 3 seconds.)	Lights Up	Cannot be charged Low battery state
Yellow	Flashing	Film ejection error occurred

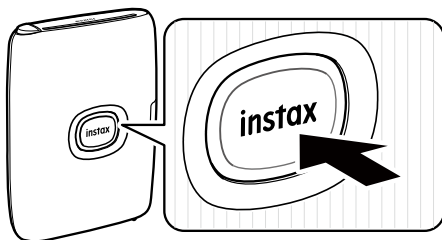
Connecting Your Smartphone and Printer Together and Printing

With the functions of the INSTAX MINI LINK Smartphone App, you can edit your favorite Smartphone images before printing by adding text, applying filters, and much more! See Page 4 on how to install the INSTAX MINI LINK Smartphone App or check out the following site: https://instax.com/mini_link_2

When Establishing Connection for the First Time

- 1 Press and hold the Power button for approximately 1 second to turn the printer on.

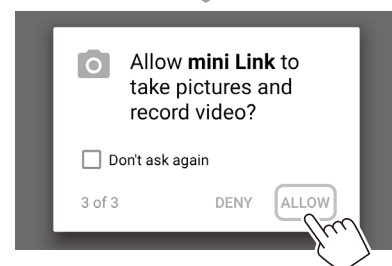
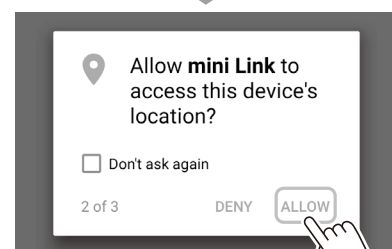
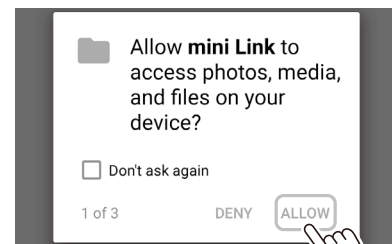
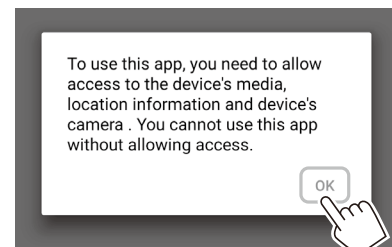
The LED lights up.



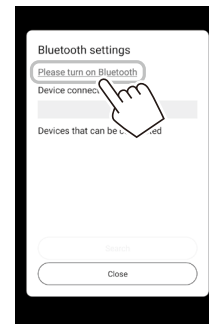
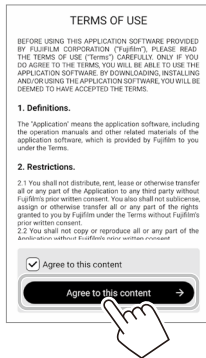
- 2 Start the downloaded INSTAX MINI LINK Smartphone App.



- 3 Click through the below pop-up windows to set up the printer.



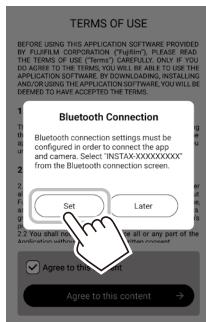
4 Read the Terms of Use, check the [Agree to this content] box and tap the [Agree to this content →] bar.



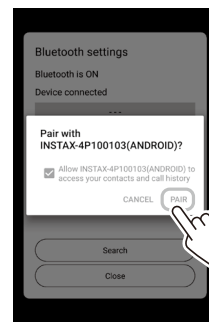
Note
If your Bluetooth settings are switched off, the following screen appears. In this case, select [INSTAX MINI LINK 2].



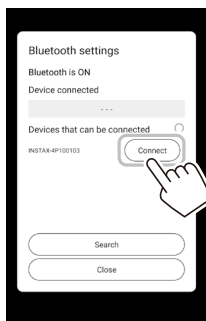
5 Set up the Bluetooth connection between your Smartphone and the printer.
[Bluetooth connection] can also be set in the process of printing.



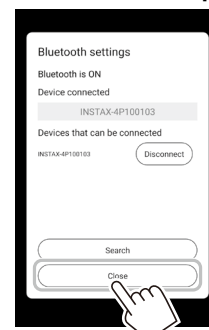
7 When the message is displayed, check the box and tap [PAIR].



6 When a printer is detected, tap [Connect].
If multiple printers are detected, select the printer you would like to connect to from the list.
Locate the printer's identifier (device name) on the bottom of the printer.
Make sure the printer is on during this step. If not, turn the printer on by pressing and holding the Power button for 1 second.

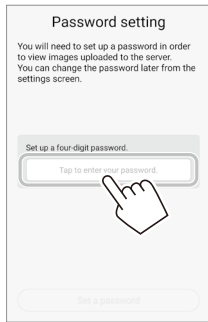


8 When a printer is connected, tap [Close].

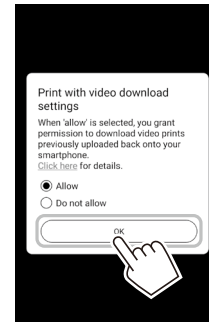


Note
If your Bluetooth settings are switched off, tap [Please turn on Bluetooth] to put the Bluetooth settings on.

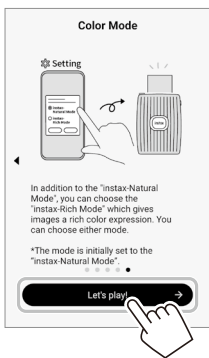
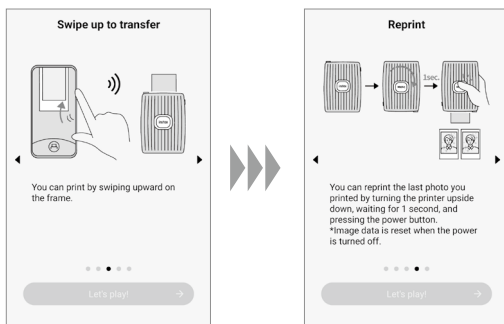
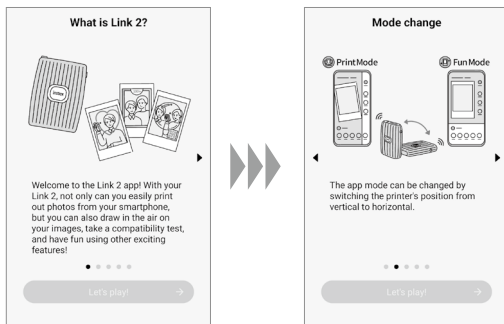
9 Set up for a four-digit password.



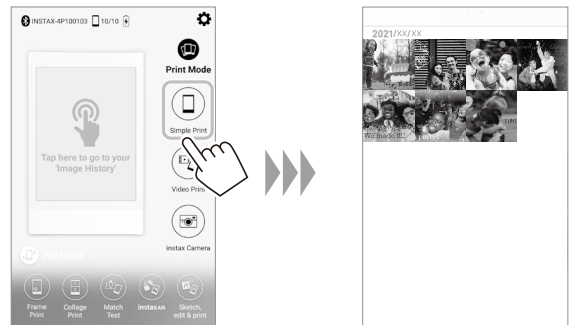
11 Set up Print with video download settings and tap [OK].



10 Quick instructions are displayed. Read the instructions and tap [Let's Play! →].



12 You are now ready to use the printer. To select an image to print, click the Simple Print button on the home screen and select an image from your photo roll.

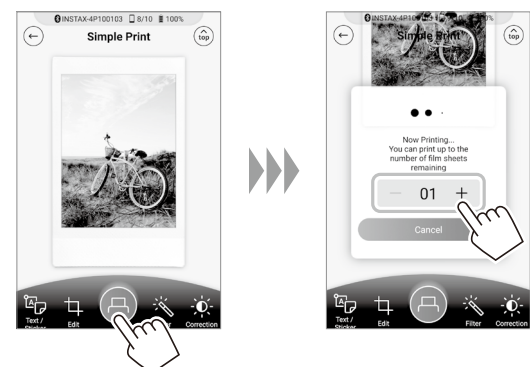


To edit your image, click on the below editing options on the bottom of the screen before printing.

	Enters text or attaches a sticker to images.
	Zooms up/down or rotates images.
	Applies a filter on images.
	Adjusts the brightness of images.

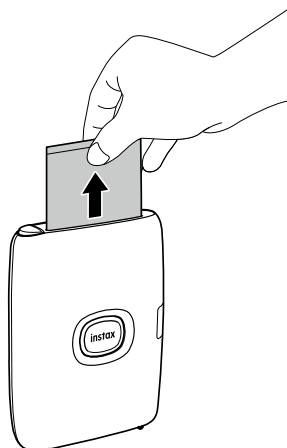
13 Tap or swipe the image up on the screen to print your image.

After a slight transmission delay, the printer starts printing. You can also select the number of images to print during image transfer.



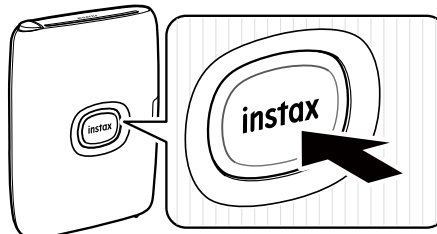
14 When the film has been ejected (the printer stops making a sound), grasp the edge of the film, then take it out.

Confirm the number of images remaining in your INSTAX MINI instant film pack on the Smartphone App screen.



When the Printer and Your Smartphone Are Already Connected

- 1** Press and hold the Power button for approximately 1 second to turn the printer on. The LED lights up.



- 2** Start the downloaded INSTAX MINI LINK Smartphone App.



- 3** To select an image to print, click the Simple Print button on the home screen and select an image from your photo roll.

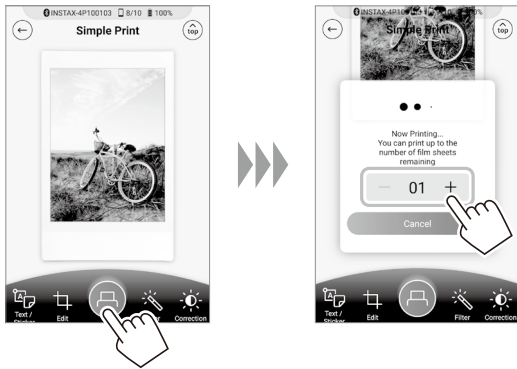


To edit your image, click on the below editing options on the bottom of the screen before printing.

	Enters text or attaches a sticker to images.
	Zooms up/down or rotates images.
	Applies a filter on images.
	Adjusts the brightness of images.

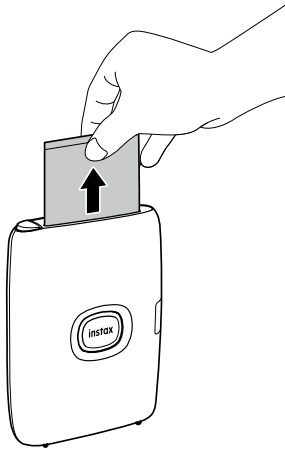
4 Tap  or swipe the image up on the screen to print your image.

After a slight transmission delay, the printer starts printing. You can also select the number of images to print during image transfer.



5 When the film has been ejected (the printer stops making a sound), grasp the edge of the film, then take it out.

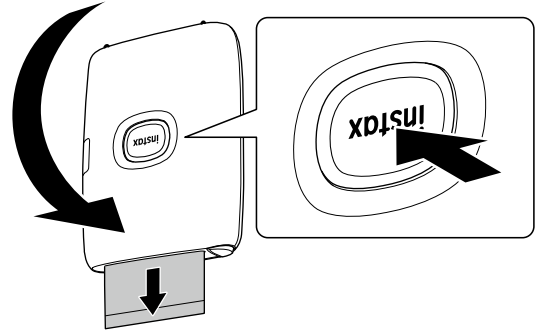
Confirm the number of images remaining in your INSTAX MINI instant film pack on the Smartphone App screen.



Reprinting an Image

You can reprint the image you last printed by using the Reprint motion sensor function.

Turn the printer over with the film ejection slot facing down and press the Power button.



Notes

- When the printer is connected to the App and the App is in INSTAX Camera mode, you cannot use the reprint function.
- When you turn the printer off, the image you last printed before turning off the printer is deleted and the image cannot be re-printed. In such a case, print the image from the App.
- When using the Reprint motion sensor feature and the printer is turned upside down, please be sure to keep the printer at least 10 cm/4 in. away from any objects.

Controlling the INSTAX MINI LINK App with the Angle of the Printer and the Power Button

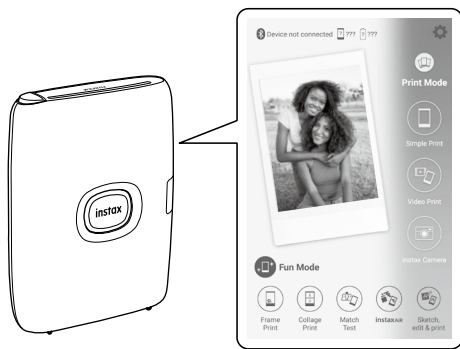
When this printer is linked with the App on your Smartphone or tablet, you can control the App by tilting the printer using the Smartphone App linked function. For details, refer to the FAQ of the INSTAX MINI LINK Smartphone App.

Note

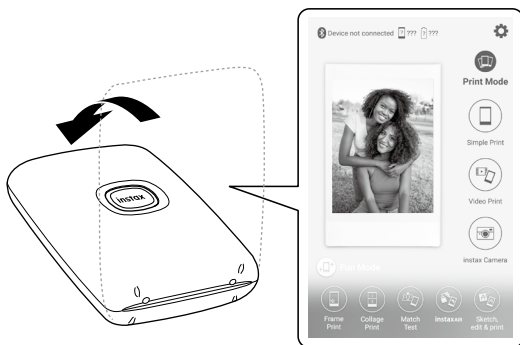
Make sure that [Camera operation settings] is set to [ON] on the INSTAX MINI LINK App. When it is set to [OFF], this function is unavailable.

Changing the App Mode when the Home Screen is Appearing on the App

Stand the printer up to switch to Print mode.



Lay the printer down with the Power button facing up to switch to Fun mode.



Notes

- You can change the App mode using the printer only on the home screen.
- The Fun mode and Print mode buttons on the screen can be used regardless of the selected mode.

Controlling Zoom and Shutter When Using the INSTAX Camera on the App

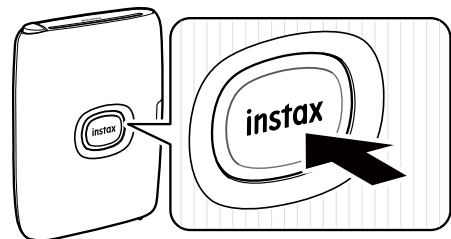
Tilt the printer forward to zoom in.



Tilt the printer backward to zoom out.



Press the Power button to release the shutter.



instaxAiR™ Photo Drawing Effect Feature

(Download of free INSTAX MINI LINK App required)

Press and hold the Feature button on top of the printer and “draw” with the printer in the air in order to depict motion drawing on your image!

Print a QR code on your image to view your video.

For more details, scan here.



https://instax.com/mini_link_2/instaxair.html

Specifications

Recording method	3-color exposure with OLED
Film used	FUJIFILM INSTAX MINI Instant Film (sold separately)
Image size	2.4 in x 1.8 in/62 mm x 46 mm
Exposure pixel count	800 x 600 dots
Exposure resolution	12.5 dots/mm (318 dpi, 80 µm dot pitch)
Exposure gradation	RGB gradation of 256 colors
Interface	Bluetooth Ver. 4.2 (BLE)
Printable image format	JPEG, PNG, HEIF, DNG
Print transmission time	Approximately 15 seconds for transmission and to start printing *Print development time approximately 90 seconds
Possible number of printed images	Approximately 100 (from full charge; number of prints depends on the usage conditions.)
Power supply	Lithium ion battery (internal type: not removable)
Charging time	Approximately 80 to 120 minutes (depending upon environment temperature at time of charging)
Power consumption	Approximately 3 W
Operating environment	Temperature: +41°F to +104°F (+5 °C to +40°C) Humidity: 20% to 80% (no condensation)
Main unit dimensions	3.6 in x 1.4 in x 4.9 in (91.9 mm x 36.4 mm x 124.8 mm) excluding projecting parts
Main unit weight	Approximately 0.46 lbs (210 g) excluding film pack
Supplied accessory	Micro USB cable (BOD700) Length: 11.8 in (30 cm)

*The above specifications are subject to change.

Troubleshooting

Please check the following items before considering a problem to be a malfunction. If the problem persists even after taking action, please contact the Fujifilm service center for repair in your country or visit the website below.

https://instax.com/mini_link_2/en/support/faq/

If the following problem occurs...

Problem	Possible causes and solutions
I cannot turn on the printer.	<ul style="list-style-type: none"> The battery may not be charged. Please charge the printer. You did not press the Power button long enough. Press and hold the Power button for approximately 1 second.
The battery loses its charge quickly.	If you use the printer in a very cold environment, the battery will drain quickly. Please keep the printer warm before printing.
The printer turned off during use.	The battery level may be low. Please charge the printer.
Charging does not start.	Make sure that the USB power adapter plug is properly connected to the power outlet.
It takes too long to charge.	At low temperatures, charging may take some time.
Charging does not start or prematurely stops.	Charge the battery in a temperature range of 41°F to 104°F (5°C to 40°C). If you cannot charge the printer in this range, contact your FUJIFILM dealer or support center.
The printer does not work properly.	<ul style="list-style-type: none"> There may be a temporary malfunction. Please press the reset button. If it still does not work properly, please contact our repair service center for repair. The battery may not be charged. Please charge the printer.
The film pack does not load or does not load smoothly.	<ul style="list-style-type: none"> Please use FUJIFILM INSTAX MINI instant print film only (INSTAX SQUARE or INSTAX WIDE instant print film cannot be used). Align the yellow mark on the film pack with the printer alignment mark (yellow) and load it.
The film does not unload.	<ul style="list-style-type: none"> The film may be misaligned due to shock such as vibration or dropping. Please load a new film pack. If the film is jammed, turn the printer off and turn it on again. If the problem persists, remove the jammed film and then load a new film pack.
Some or all of the finished prints are white.	Do not open the film door until the film is used up. If the film door is opened with film remaining, the film is exposed and the exposed area becomes white.

Problem	Possible causes and solutions
The print is uneven.	<ul style="list-style-type: none"> • Do not shake, bend, fold or hold the print immediately after it is printed. • Do not obstruct the film ejection slot.
I cannot reprint images.	The stored image is deleted when the printer is turned off.
I cannot change the App mode even when operating the INSTAX MINI LINK App.	Setting [Camera operation settings] on the INSTAX MINI LINK App to [ON] enables the Smartphone App linked function to work. Check the direction the printer is facing.
The function that is used by tilting the printer does not work.	Confirm that [Camera operation settings] on the INSTAX MINI LINK App is set to [ON].


IMPORTANT SAFETY NOTICE

This product has been designed with safety in mind, and to provide safe operation when handled correctly and in accordance with the instructions in this User's Guide. It is important that both the product and the INSTAX MINI instant film pack are handled properly and used only to print photos as instructed in this User's Guide and in the INSTAX MINI instant film pack instructions. For your ease and safety, strictly follow the instructions in this User's Guide. Keep this User's Guide in a safe, convenient place for easy future reference as needed.


WARNING

This symbol indicates danger, which could result in product damage, injury or death. Follow the instructions indicated to avoid damage to the printer or injury.









WARNING

 If one of the following cases occur, immediately unplug the Micro USB cable, turn the printer off and refrain from any further use of the printer:

- The printer becomes hot, emits smoke, has a burnt smell, or otherwise seems abnormal.
- The printer is dropped into water, or foreign objects like water, sand, dirt or metal get inside the printer.

 The printer has a built-in battery. Do not subject it to heat, expose it to an open flame, drop it, or otherwise apply impact to it. Doing so may cause the printer to explode, resulting in injury.

WARNING

-  Never attempt to take this product apart. You may be injured.**
-  All repairs should be handled solely by Fujifilm. Injury may result from attempts to self-assess or repair this printer.**
-  If this product is dropped or damaged so that the inside is showing, do not touch it. Contact Fujifilm.**
-  Do not touch any parts which are inside the film door. You may be injured.**
-  Never get this product wet or handle it with wet hands. Doing so may result in electric shock and injury.**
-  Promptly unplug the Micro USB cable once battery is fully charged. Printer will not over-charge.**
-  Keep out of the reach of small children. This product could cause injury in the hands of a child.**
-  Do not cover or wrap the printer or USB AC power adapter in a cloth or blanket, or otherwise place the printer in the sun or an environment where heat may build up. This could distort the casing or cause a fire.**

Printer Care

■ Handling the Printer

- ⚠ CAUTION - Do not expose to excessive heat such as sunshine, fire or the like during use, storage or transportation. An explosion or leakage of flammable liquid or gas could result. Also, ensure proper disposal in accordance with the instructions below.
- ⚠ CAUTION - Do not remove or attempt to remove the lithium battery. Without limitation, do not expose or attempt to expose the camera or the lithium battery to fire or a hot oven. Do not attempt to damage, mechanically crush or cut the lithium battery, as an explosion could result.
- ⚠ CAUTION - Do not subject to extremely low air pressure at high altitude. An explosion or the leakage of flammable liquid or gas could result.

■ Printer Care

1. **Do not open the film door until you have used up the the loaded instant film pack. Doing so will expose the remaining film, causing the remainder of the film pack to become unstable.**
2. Your printer is a precision instrument. Do not get it wet or drop it. Also, do not expose it to sand, dust or dirt.
3. Do not use cleaning products or solvents such as those with bleach or alcohol to remove dirt. Wipe with a damp cloth if and as necessary.
4. Keep the film chamber and printer interior clean to avoid damaging the film.
5. In hot weather, do not leave your printer in hot places such as in a car or on the beach. Do not leave it in damp places or places where weather exposure could result.
6. Moth repellent gas such as naphthalene may affect your printer and prints. Store your printer and photo prints in a place where exposure to harmful cleaning or other household elements will be avoided.
7. Note that the temperature range within which your printer can be used is 41°F to 104°F (5°C to 40°C).
8. Take great care to ensure that your prints do not violate copyright, image rights, privacy or other personal rights and do not offend public decency. Actions that violate the rights of others, that are contrary to public decency, or that constitute a nuisance may be punishable by law or otherwise legally actionable.
9. This printer is designed for personal/household and limited commercial use.

■ Charging the Battery

The battery is not charged at shipment. Charge the battery completely before use.

Charge the battery using the supplied Micro USB cable and the USB AC Adapter from your Smartphone. Charging times will increase at ambient temperatures below 50°F (10°C) or above 95°F (35°C). Do not attempt to charge the battery in environments with temperatures above 104°F (40°C); at temperatures below 41°F (5°C), the battery will not charge.

■ Battery Life

At normal temperatures, the battery can be recharged about 300 times. A noticeable decrease in the length of time the battery will hold a charge indicates that it has reached the end of its service life.

⚠ CAUTION - Handling the Battery

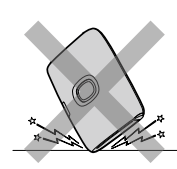
The battery and printer body may become warm to the touch after extended use. This is normal.

■ Required certification markings are located inside the film chamber.

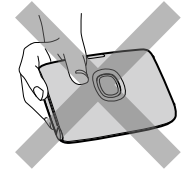
■ Cautions During Printing



Do not shake the printer while printing.



Do not drop the printer while printing.



Do not cover the film ejection slot while printing.

■ INSTAX MINI Instant Film and Print Care

This printer uses INSTAX MINI instant print film, sold separately. See FUJIFILM INSTAX MINI instant film pack use instructions.

Follow all instructions for safe and proper use, including:

1. Keep the film in a cool place. Do not leave the film in a place where the temperature is extremely high (e.g., in a closed car) for many hours.
2. Do not puncture, tear, or cut INSTAX MINI instant film. If film becomes damaged, do not use.
3. When you load a film pack, use the film as soon as possible.
4. If the film has been kept in a place where the temperature is extremely high or low, bring it to room temperature before loading or starting to print photos.
5. Be sure to use the film before the expiration or "Use Before" date.
6. Avoid airport checked luggage inspection and other strong X-ray illumination. Such exposure may cause fogging and otherwise affect your unused film. Carrying your printer and film onto an aircraft in your carry-on luggage is recommended. (Check with each airport for more information.)
7. Avoid exposing the developed prints to strong light, and keep them in a cool, dry place.
8. ⚠ Do not puncture or cut the film as it contains a small amount of caustic paste (high alkaline). Never let children or animals put the film into their mouth. Also pay attention so that the paste does not come into contact with skin or clothes.
9. ⚠ If the paste inside the film comes into contact with skin or clothes, immediately wash off with plenty of water. If the paste comes into contact with the eyes or mouth, immediately wash the area with plenty of water and contact a doctor. Note that the alkaline inside the film remains active for about 10 minutes after the photo has been printed.

⚠ **Cautions on Handling INSTAX MINI Instant Film and Prints**
See below for film activities to be avoided.



Bluetooth® Devices: Cautions

IMPORTANT: Read the following notices before using the product's built-in Bluetooth transmitter.

■ **Use only as part of a Bluetooth network.**

Do not use in applications requiring a high degree of reliability, for example in medical devices or other systems that may directly or indirectly impact human life. When using the device in computer and other systems that demand a greater degree of reliability than Bluetooth networks, be sure to take all necessary precautions to ensure safety and prevent malfunction. FUJIFILM Corporation and its affiliates do not accept liability for damages resulting from unauthorized use.

■ **Use only in the country in which the device was purchased.**

This device conforms to regulations governing Bluetooth devices in the country in which it was purchased. Observe all location regulations when using the device. FUJIFILM Corporation and its affiliates do not accept liability for problems arising from use in other jurisdictions.

■ **Wireless data (images) may be intercepted by third parties.**

FUJIFILM Corporation and its affiliates are not responsible for intercepted transmissions, or for unintended image uses.

■ **Do not use the device in locations subject to magnetic fields, static electricity, or radio interference.**

Do not use the transmitter in the vicinity of microwave ovens or in other locations subject to magnetic fields, static electricity, or radio interference that may prevent reception of wireless signals. Mutual interference may occur when the transmitter is used in the vicinity of other wireless devices operating in the 2.4 GHz band.

■ **The Bluetooth transmitter operates in the 2.4 GHz band. The maximum radio-frequency power is 9.10 mW.**

■ **This device operates on the same frequency as commercial, educational, and medical devices and wireless transmitters.**

It also operates on the same frequency as licensed transmitters and special unlicensed low-voltage transmitters used in radio-

frequency identification tracking systems for assembly lines and in other similar applications.

■ **To prevent interference with the above devices, observe the following precautions.**

Confirm that the radio-frequency identification transmitter is not in operation before using this device. If you notice that this device causes interference in low-voltage radio-frequency identification tracing systems, contact a Fujifilm representative.

■ **The following may be punishable by law:**

- Disassembly or modification of this device.
- Removal of device certification labels.

For customers in the USA:

Contains FCC ID : W2Z-03000008

FCC Statement

This device complies with part 15 of the FCC Rules. Operation is subject to the following two conditions: (1) This device may not cause harmful interference, and (2) this device must accept any interference received, including interference that may cause undesired operation.

For more information, access the website below.

https://instax.com/mini_link_2/en/spec/

CAUTION

This equipment has been tested and found to comply with the limits for a Class B digital device, pursuant to Part 15 of the FCC Rules. These limits are designed to provide reasonable protection against harmful interference in a residential installation. This equipment generates, uses, and can radiate radio frequency energy and, if not installed and used in accordance with the instructions, may cause harmful interference to radio communications. However, there is no guarantee that interference will not occur in a particular installation. If this equipment does cause harmful interference to radio or television, which can be determined by turning the equipment off and on, the user is encouraged to try to correct the interference by one or more of the following measures:

- Reorient or relocate the receiving antenna.
- Increase the separation between the equipment and receiver.
- Connect the equipment into an outlet on a circuit different from that to which the receiver is connected.
- Consult the dealer or an experienced radio/TV technician for help.

Changes or modifications not expressly approved by Fujifilm responsible for compliance could void the user's authority to operate the equipment.

This transmitter must not be co-located or operated in conjunction with any other antenna or transmitter.

The available scientific evidence does not show that any health problems are associated with using low power wireless devices. There is no proof, however, that these low power wireless devices are absolutely safe. Low power wireless devices emit low levels of radio frequency energy (RF) in the microwave range while being used. Whereas high levels of RF can produce health effects (by heating tissue), exposure of low-level RF that does not produce heating effects causes no known adverse health effects. Many studies of low-level RF exposures have not found any biological effects. Some studies have suggested that some biological effects might occur, but such findings have not been confirmed by additional research. This device has been tested and found to comply with FCC radiation exposure limits set forth for an uncontrolled environment and meets the FCC radio frequency (RF) Exposure Guidelines.

Notes on the Grant

To comply with Part 15 of the FCC Rules, this product must be used with a Fujifilm-specified Micro USB cable.

For customers in Canada:

Contains IC : 7736B-03000007

CAN ICES-003 (B)/NMB-003 (B)

This device contains licence-exempt transmitter(s)/receiver(s) that comply with Innovation, Science and Economic Development Canada's licence-exempt RSS(s). Operation is subject to the following two conditions:

1. This device may not cause interference.
2. This device must accept any interference, including interference that may cause undesired operation of the device.

The available scientific evidence does not show that any health problems are associated with using low power wireless devices. There is no proof, however, that these low power wireless devices are absolutely safe. Low power wireless devices emit low levels of radio frequency energy (RF) in the microwave range while being used. Whereas high levels of RF can produce health effects (by heating tissue), exposure of low-level RF that does not produce heating effects causes no known adverse health effects. Many studies of low-level RF exposures have not found any biological effects. Some studies have suggested that some biological effects might occur, but such findings have not been confirmed by additional research. This device has been tested and found to comply with ISED radiation exposure limits set forth for an uncontrolled environment and meets RSS-102 of the ISED radio frequency (RF) exposure rules.

Proper Disposal – US, Canada and Latin America



Disposal of Electric and Electronic Equipment in Private Households
Disposal of used Electrical & Electronic Equipment (Applicable in the European Union and other European countries with separate collection systems)

This symbol on the product, or in the manual and in the warranty, and/or on its packaging indicates that this product shall not be treated as household waste.

Instead it should be taken to an applicable collection point for the recycling of electrical and electronic equipment.

By ensuring this product is disposed of correctly, you will help prevent potential negative consequences to the environment and human health, which could otherwise be caused by inappropriate waste handling of this product.

The recycling of materials may help to conserve natural resources. For more detailed information about recycling of this product, please contact your local city recycling office, your household waste disposal service or the authorized Fujifilm dealer from which you purchased the product.

For proper disposal in the United States at product end-of-life, please contact 1-800-800-3854 Option #1 INSTAX.

For proper disposal in Canada at product-end-of-life, please contact 1-800-461-0416.

For proper disposal in Latin America at product end-of-life, please contact your local FUJIFILM distributor or dealer for disposal instructions.

Information for Fujifilm in the United States
FUJIFILM North America Corp.
200 Summit Lake Drive
Valhalla, New York 10595, USA

Information for Fujifilm in Canada
FUJIFILM Canada Inc.
600 Suffolk Court
Mississauga, Ontario L5R 4G4, Canada

If you have any inquiries about this product, please contact a FUJIFILM authorized dealer, or access the website below.
https://instax.com/mini_link_2

FUJIFILM, INSTAX, INSTAX MINI, INSTAX SQUARE, INSTAX WIDE, INSTAX MINI LINK and INSTAXAIR are trademarks of FUJIFILM Corporation and its affiliates.

© 2022 FUJIFILM Corporation. All rights reserved.

The Bluetooth® word mark and logos are registered trademarks owned by the Bluetooth SIG, Inc., and any use of such marks by Fujifilm is under license.

Independent JPEG Group (IJG) Licenses

The software used in the INSTAX MINI LINK 2 Smartphone Printer is based in part on the work of the Independent JPEG Group.

FUJIFILM

FUJIFILM Corporation

7-3, AKASAKA 9-CHOME, MINATO-KU, TOKYO 107-0052, JAPAN